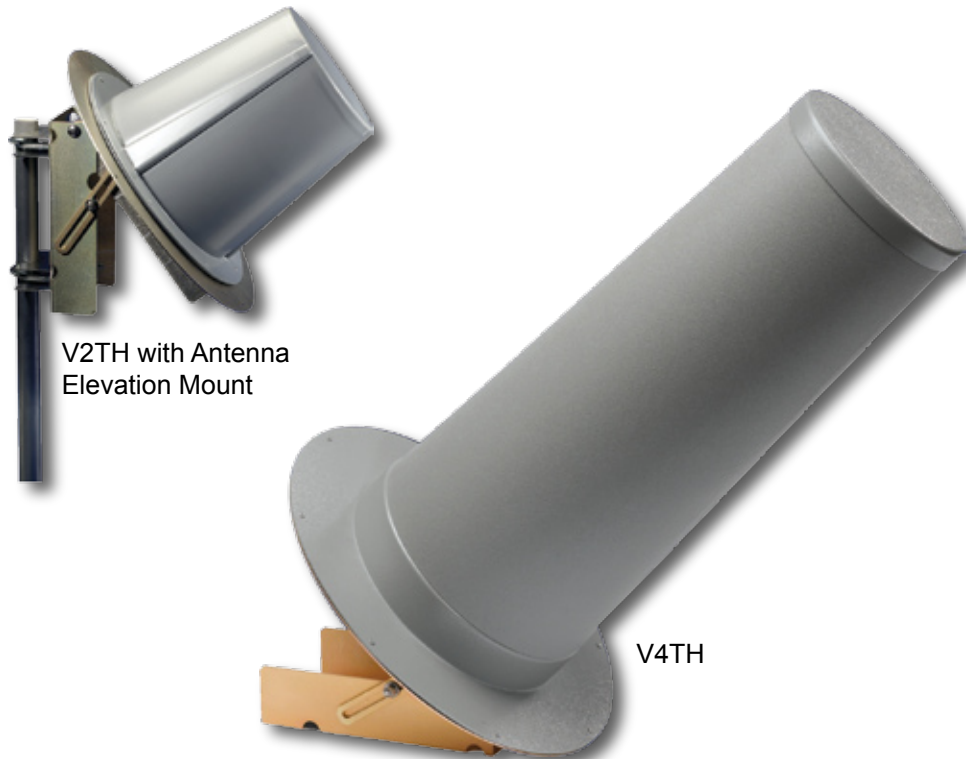


V2TH & V4TH Satellite Antennas



V2TH with Antenna
Elevation Mount

V4TH

Description

The V2TH and V4TH Satellite Antennas provide a cost-effective, high-performance geostationary satellite data telemetry link for hydrological and meteorological data transmission. Stevens' V2TH and V4TH helix design virtually eliminates all existing problems that occur with other available antenna technology. The antennas are designed to operate through the destructive forces of severe weather, including extreme freezing temperatures, hurricane-force winds and immersion in the snow of mountainous regions.

Apart from physical size, the primary functional difference between the V2TH and V4TH Satellite Antenna is the gain (V2TH is 5.5 dB Nominal, V4TH is +10 dB Nominal). Also, when pointed directly at a satellite, the V4TH antenna's input power range of 6.5 to 10 watts (6 to 25 watts for the V2TH) results in the GOES DCS-permitted EIRP of 48 to 50 dBm (44 to 50 dBm for the V2TH).

The Stevens V2TH and V4TH can be suspended or mounted inside nonmetallic protective structures, or mounted outside on a building, post or tower. For adjustable exterior mounting, the customers may use the Stevens Antenna Elevation Mount. The Elevation Mount has a universal design for use with either the V2TH or V4TH antennas, allowing them to be attached to a vertical pole using either U-bolts (2" provided), straps or hose clamps. The Elevation Mount can also be attached to a wall or other flat surface.

Features

- Rugged and durable polycarbonate housing
- Versatile and easy to mount
- Reliable signal transmission through obstructions
- Uniform antenna beam pattern

Applications

- For geostationary satellite communications:
 - GOES
 - MTSAT
 - METEOSAT
 - INSAT
 - FENG YUN
- For applications requiring higher-gain directional uplink antennas

Corporate Headquarters

12067 NE Glenn Widing Drive
Suite 106
Portland, Oregon 97220

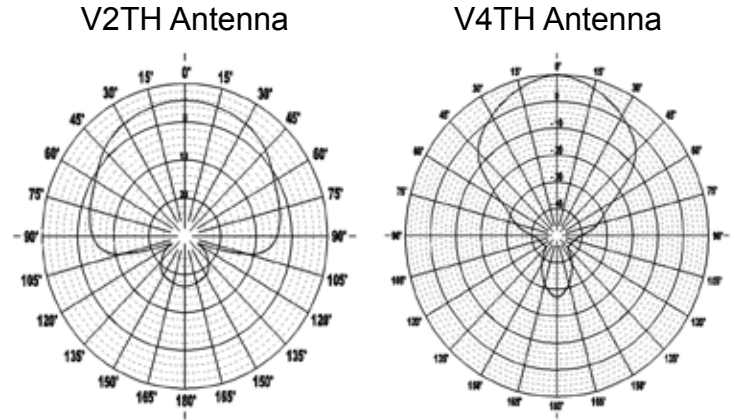
800.452.5272 Tel
503.469.8000
503.469.8100 Fax
info@stevenswater.com
www.stevenswater.com

Since 1911, Stevens Water Monitoring Systems, Inc. has provided complete water monitoring solutions including:

- Water Level Sensors
- Water Quality Sensors
- Soil Moisture Sensors
- Chart Recorders
- Staff Gages
- Telemetry Systems
- Data Collection Platforms

Technical Specifications

Antenna Beam Pattern



	V2TH	V4TH
Range	402 Mhz ± 10 MHz	402 Mhz ± 10 MHz
Impedance	50 Ohms	50 Ohms
VSWR	1.5:1 max	1.5:1 max
Polarization	Right Hand Circular	Right Hand Circular
Gain	+5.5 dB Nominal	+10 dB Nominal
Power	100W CW	100W CW
Input Power Range	6 to 25 watts	6.3 to 10 watts
Permitted EIRP with Input Power	44 to 50 dBm	48 to 50 dBm

	V2TH	V4TH
1 dB	60°	15°
3 dB	90°	30°
6 dB	120°	45°
Axial Ratio	1 dB max	2 dB max
Connection	N Female	N Female

	V2TH	V4TH
Antenna Weight	5 lbs (2.3 kg)	7.8 lbs (3.6 kg)
Base Mount Weight	3.6 lbs (1.6 kg)	3.6 lbs (1.6 kg)
Base Diameter x Height x Top Diameter	16" x 10" x 7.5" (41 cm x 26 cm x 19 cm)	16" x 24" x 8" (41 cm x 61 cm x 20 cm)

Ordering Information

Part No.	Description
70018	V2TH Satellite Antenna
70208	V4TH Satellite Antenna

Part No.	Description
92845-xxx	Cable Assembly (xxx-length)
70020	Elevation Mount Kit