

SDI-12 *Xplorer*

USB to SDI-12 Interface

The Stevens SDI-12 Xplorer enables easy programming of any SDI-12 sensor simply by connected the sensor to a computer's USB port.

Configuration of the sensor can be done using any terminal program or Stevens Xplorer Windows-based software.

One side of the SDI-12 Xplorer features a USB Type-B connection for plugging into a computer. The other side of the SDI-12 Xplorer has +12V out, GND, and SDI-12 data channels for connection to any standard SDI-12 sensor.

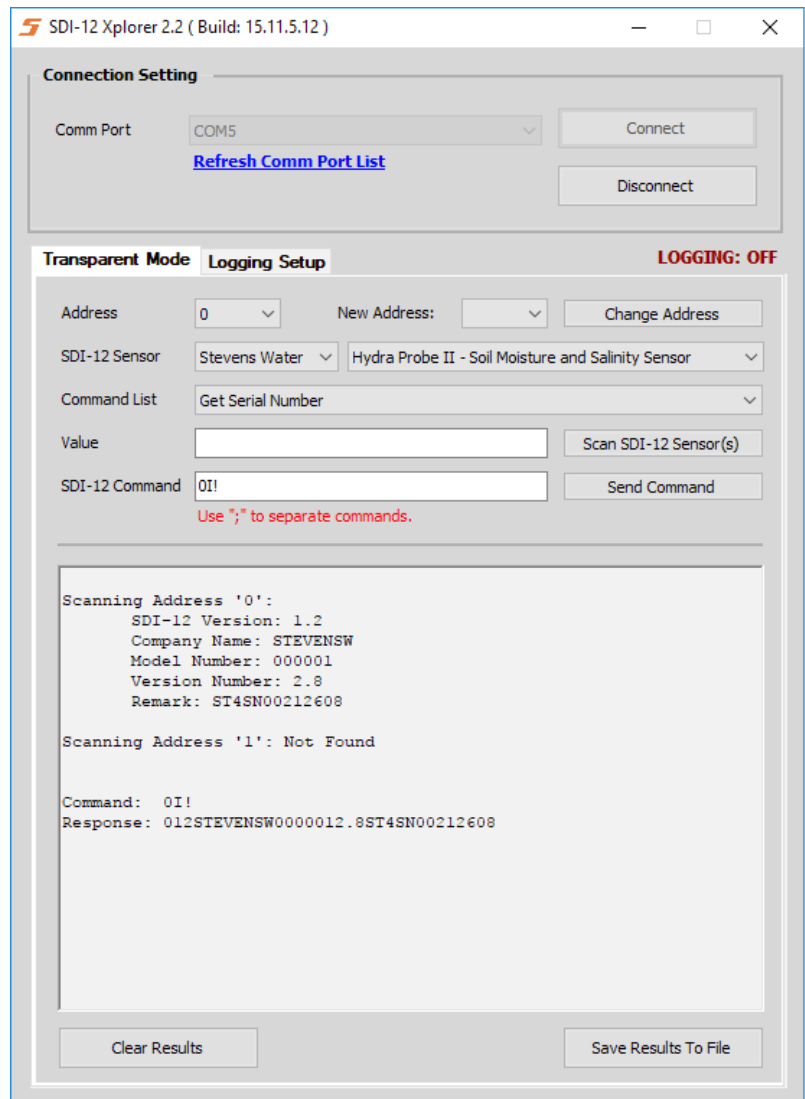
- Easily configure and/or log any SDI-12 sensor directly with a computer and GUI
- No data logger needed
- Growing library of manufacturers' sensors with commands explained
- Sensor power provided via USB



STEVENS
MEASUREMENTS TO MIND

Applications

- SDI-12 sensor configuration or programming
- SDI-12 sensor troubleshooting
- Field use
- Research applications
- Classroom labs



The SDI-12 Xplorer Windows GUI being used to configure a Stevens HydraProbe soil sensor.

About Stevens Water

With a focus on simplicity, innovation and efficient solutions, Stevens Water are experts in hydrological and environmental monitoring. We've been providing complete water monitoring solutions since 1911.



Stevens Water Monitoring Systems, Inc.

12067 NE Glenn Widing Drive, Suite 106, Portland, Oregon 97220 | 1 800 452 5272 | 503 445 8000

www.stevenswater.com